

PROVINCIAL AIR ACCESS TRACKING PROGRAM

(1) Inbound direct non-stop seat capacity to Newfoundland and Labrador October – December 2013

NOTES

- Inbound direct non-stop seat capacity represents scheduled, not flown, capacity
- Counts include non-stop capacity to the province's seven major airports: St. John's, Gander, Deer Lake, Stephenville, St. Anthony, Goose Bay and Wabush from any airport outside the province
- Intra-provincial seat capacity is not included (please see (2) *Intra-Provincial non-stop seat capacity in Newfoundland and Labrador October – December 2013 [Q4 2013]* below)
- **Source:** Diio Mi as of Jan 02, 2014 (capacity subject to change as airline schedule filings are updated)

This summary includes the following tables:

- Inbound Non-stop Seat Capacity Overview Q4 2013 and Outlook Q1 2014
- Inbound Non-stop Seat Capacity January to December 2013
- Inbound Non-stop Seat Capacity by Major Airport Q4 2013 and Outlook Q1 2014
- Inbound non-stop Seat Capacity by Airline Q4 2013 and Outlook Q1 2014

Inbound Non-stop Seat Capacity Overview Q4 2013 and Outlook Q1 2014

From (origin airport)	Q4			Q1 Outlook		
	2012	2013	Change	2013	2014	Change
Domestic						
Halifax, NS	118,181	115,058	-2.6%	110,519	102,109	-7.6%
Charlo, NB	1,224	1,270	3.8%	1,054	1,734	64.5%
Bathurst, NB*	-	608	-	-	1,216	
Moncton, NB*	-	608	-	-	1,216	
Baie Comeau, QC*	-	608	-	-	1,216	
Blanc Sablon, QC	5,372	5,148	-4.2%	5,635	3,876	-31.2%
Schefferville, QC	1,692	1,864	10.2%	1,692	2,310	36.5%
Mont Joli, QC*	621	760	22.4%	456	722	58.3%
Sept-Îles, QC*	17,010	18,991	11.6%	19,999	19,947	-0.3%
Quebec, QC*	-	679	-	-	969	-
Montreal, QC	9,762	8,696	-10.9%	7,577	8,284	9.3%
Ottawa, ON	8,046	6,723	-16.4%	7,469	5,775	-22.7%
Toronto, ON	78,661	88,925	13.0%	71,402	83,593	17.1%
Calgary, AB	-	-	0.0%	-	-	-
Total Domestic	240,569	249,938	3.9%	225,803	232,967	3.2%
US						
Newark, NJ	6,060	4,620	-23.8%	6,260	4,560	-27.2%
Orlando, FL	1,224	1,224	-	2,278	2,444	7.3%
Total US	7,284	5,844	-19.8%	8,538	7,004	-18.0%
International						
St. Pierre	1,872	1,920	2.6%	1,872	1,824	-2.6%
London (LHR)	2,520	3,120	23.8%	-	-	-
Cancun, MX	-	-	-	-	378	-
Montego Bay, JM	-	-	-	567	378	-
Varadero, CU	-	-	-	756	756	-
Cayo Coco, CU	-	-	-	-	378	-
Santa Clara, CU	-	-	-	567	378	-
Punta Cana, DO	-	-	-	952	1,360	-
Total International	4,392	5,040	14.8%	4,714	5,452	15.7%
Total Capacity	252,245	260,822	3.4%	239,055	245,423	2.7%

Inbound Non-stop Seat Capacity January to December 2013

From (origin airport)	Jan - Dec		
	2012	2013	Change
Domestic			
Halifax, NS	465,775	456,862	-1.9%
Bathurst, NB*	-	608	-
Charlo, NB	1,224	4,802	292.3%
Moncton, NB*	-	608	-
Baie Comeau, QC*	-	608	-
Blanc Sablon, QC	20,452	20,684	1.1%
Schefferville, QC	3,096	7,150	130.9%
Havre St. Pierre	36	-	-100.0%
Mont Joli, QC*	2,025	2,641	30.4%
Sept-Îles, QC*	62,724	74,471	18.7%
Quebec, QC*	57	1,086	1805.3%
Montreal, QC	51,900	41,779	-19.5%
Ottawa, ON	31,609	32,397	2.5%
Toronto, ON	375,826	409,747	9.0%
Calgary, AB	10,064	11,152	10.8%
Total Domestic	1,024,788	1,064,595	3.9%
US			
Newark, NJ	29,957	34,725	15.9%
Orlando, FL	2,856	5,168	81.0%
Total US	32,813	39,893	21.6%
International			
St. Pierre	7,410	7,536	1.7%
London (LHR)	18,840	21,960	16.6%
Cancun, MX	1,992	-	-100.0%
Montego Bay, JM	1,134	1,701	50.0%
Varadero, CU	3,402	3,213	-5.6%
Santa Clara, CU	-	1,701	-
Punta Cana, DO	-	1,360	-
Total International	32,778	37,471	14.3%
Total Capacity	1,090,379	1,141,959	4.7%

*Although Pascan Aviation continues its service from these origins to Wabush, Labrador, seat capacity for this airline is not available from the Diio Mi database for the period February 2012 to October 2013.

Inbound Non-stop Seat Capacity by Major Airport Q4 2013 and Outlook Q1 2014

Destination	Origin	Q4			Q1		
		2012	2013	Change	2013	2014	Change
St. John's	Halifax	89,963	85,237	-5.3%	81,333	71,573	-12.0%
	Ottawa	8,046	6,723	-16.4%	7,469	5,775	-22.7%
	Moncton	-	608	-	-	1,216	-
	Montreal	7,801	8,215	5.3%	6,208	7,803	25.7%
	Calgary	-	-	-	-	-	-
	Toronto	66,350	72,173	8.8%	60,602	67,489	11.4%
	Newark	6,060	4,620	-23.8%	6,260	4,560	-27.2%
	Orlando	1,224	1,224	0.0%	2,278	2,444	7.3%
	St Pierre	1,872	1,920	2.6%	1,872	1,824	-2.6%
	London (LHR)	2,520	3,120	23.8%	-	-	-
	Cancun	-	-	-	-	378	-
	Montego Bay	-	-	-	567	378	-33.3%
	Cayo Coco	-	-	-	-	378	-
	Santa Clara	-	-	-	567	378	-33.3%
	Punta Cana	-	-	-	952	1,360	42.9%
	Varadero	-	-	-	567	378	-33.3%
TOTAL	183,836	183,840	0.0%	168,675	165,934	-1.6%	
Deer Lake	Halifax	14,518	14,471	-0.3%	14,711	14,786	0.5%
	Toronto	12,311	16,752	36.1%	10,800	16,104	49.1%
	Varadero	-	-	-	189	189	-
	TOTAL	26,829	31,223	16.4%	25,700	31,079	20.9%
Gander	Halifax	9,200	10,750	16.8%	9,975	11,250	12.8%
	Toronto	-	-	-	-	-	-
	Varadero	-	-	-	-	189	-
	TOTAL	9,200	10,750	16.8%	9,975	11,439	14.7%
St. Anthony	Blanc Sablon	2,686	2,574	-4.2%	3,017	1,938	-35.8%
Stephenville	Toronto	-	-	-	-	-	-
Wabush	Baie Comeau*	-	608	-	-	1,216	-
	Charlo	1,224	1,270	3.8%	1,054	1,734	64.5%
	Schefferville	1,692	1,864	-	1,692	2,310	-
	Quebec*	-	679	-	-	969	-
	Montreal	1,961	481	-	1,369	481	-
	Mont Joli*	621	760	22.4%	456	722	58.3%
	Sept-Iles*	17,010	18,991	11.6%	19,999	19,947	-0.3%
	Bathurst*	-	608	-	-	1,216	-
TOTAL	22,508	25,261	12.2%	24,570	28,595	16.4%	
Goose Bay	Blanc Sablon	2,686	2,574	11.6%	2,618	1,938	-26.0%
	Halifax	4,500	4,600	2.2%	4,500	4,500	0.0%
	TOTAL	7,186	7,174	-0.2%	7,118	6,438	-9.6%
TOTAL PROVINCE		252,245	260,822	3.4%	239,055	245,423	2.7%

*Seat capacity provided by Pascan Aviation from these origins to Wabush is not available for the period February 2012 to October 2013 from the source database

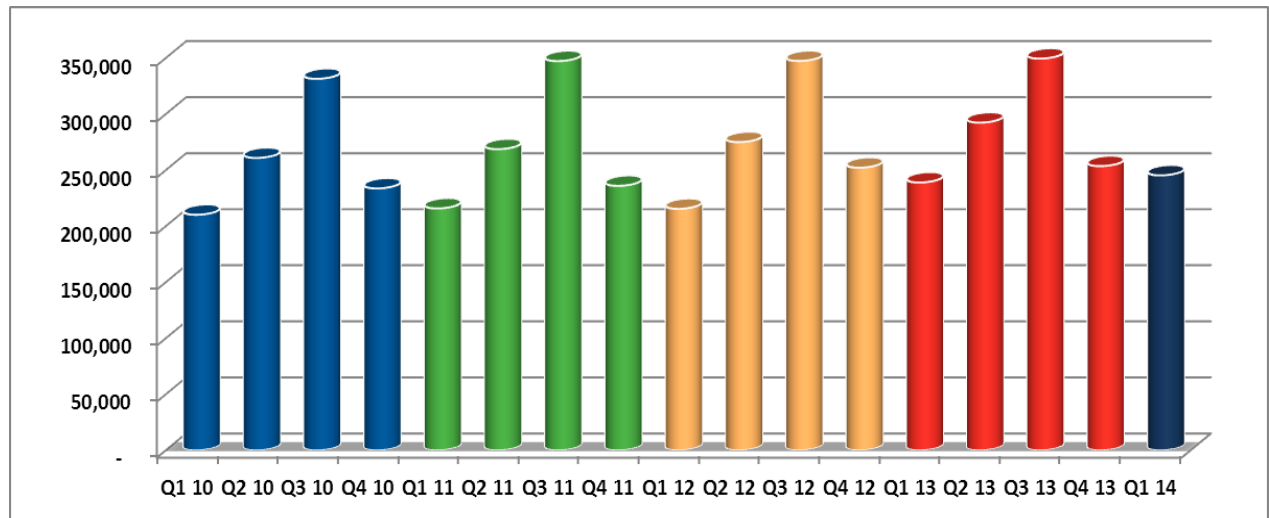
Inbound Non-stop Seat Capacity by Airline Q4 2013 and Outlook Q1 2014

Airline	Q4				Outlook Q1			
	2012	2013	Change	Share (1)	2013	2014	Change	Share (1)
Air Canada	160,105	163,074	1.9%	62.5%	152,662	150,749	-1.3%	61.4%
WestJet	44,098	52,195	18.4%	20.0%	38,998	50,099	28.5%	20.4%
Porter	22,260	18,060	-18.9%	6.9%	18,130	11,550	-36.3%	4.7%
Provincial Airlines	15,627	14,200	-9.1%	5.4%	15,580	13,523	-13.2%	5.5%
United Airlines	6,060	4,620	-23.8%	1.8%	6,260	4,560	-27.2%	1.9%
Pascan Aviation*	N/A	3,534	-	1.4%	N/A	7,049	-	2.9%
Air Liaison	1,530	2,508	63.9%	1.0%	2,052	2,432	18.5%	1.0%
Sunwing	-	-	0.0%	0.0%	1,890	2,268	20.0%	0.9%
Air St. Pierre	1,872	1,920	2.6%	0.7%	1,872	1,824	-2.6%	0.7%
Air Transat	-	-	-	0.0%	510	676	32.5%	0.3%
Air Inuit	693	711	2.6%	0.3%	702	693	-1.3%	0.3%
Air Labrador	-	-	-	0.0%	399	-	-100.0%	0.0%
Total Province	252,245	260,822	3.4%	100%	239,055	245,423	2.7%	100%

* Pascan Aviation still serving Labrador in 2012/2013 but seat capacity not available from database for the period February 2012 to October 2013

(1) Airline share of inbound non-stop seat capacity in Q4 2013 and Q1 2014

Total Quarterly Non-stop Inbound Seat Capacity to Newfoundland and Labrador Q1 2010 – Q1 2014



Does not include Pascan Aviation capacity for the period February 2012 to October 2013 as data not available from source database

(2) Intra-provincial non-stop seat capacity in Newfoundland and Labrador July – September 2013 (Q3 2013)

NOTES

- Seat capacity represents scheduled, not flown, capacity
- Counts include non-stop capacity between the province's seven major airports: St. John's, Gander, Deer Lake, Stephenville, St. Anthony, Goose Bay and Wabush
- Source: Diio Mi as of 02 January, 2014 (capacity subject to change as airline schedule filings are updated)

The summary report includes the following tables:

- Non-stop Seat Capacity by Airport Q4 2013 and Outlook Q1 2014
- Non-stop Seat Capacity January to December 2013
- Non-stop Seat Capacity by Airline Q4 2013 and Outlook Q1 2014

Intra-provincial Non-stop Seat Capacity by Airport Q4 2013 and Outlook Q1 2014

Destination	Q4			Q1 Outlook		
	2012	2013	Change	2013	2014	Change
Island						
St. John's	30,670	27,910	-9.0%	30,068	29,296	-2.6%
Gander	8,226	8,748	6.3%	8,100	8,100	0.0%
Deer Lake	22,876	19,606	-14.3%	22,328	22,236	-0.4%
Stephenville	2,244	1,170	-47.9%	2,108	2,134	1.2%
St Anthony	3,570	3,410	-4.5%	3,502	2,822	-19.4%
Total Island	67,586	60,844	-10.0%	66,106	64,588	-2.3%
Labrador						
Goose Bay	31,022	28,878	-6.9%	30,370	29,812	-1.8%
Wabush	12,548	10,846	-13.6%	12,272	10,932	-10.9%
Total Labrador	43,570	39,724	-8.8%	42,642	40,744	-4.5%
Total Province	111,156	100,568	-9.5%	108,748	105,332	-3.1%

Intra-provincial Non-stop Seat Capacity Jan to Dec 2013

Destination	Jan-Dec		
	2012	2013	Change
Island			
St. John's	122,389	117,974	-3.6%
Gander	32,310	36,072	11.6%
Deer Lake	92,116	83,750	-9.1%
Stephenville	9,656	5,756	-40.4%
St Anthony	13,870	13,458	-3.0%
Total Island	270,341	257,010	-4.9%
Labrador			
Goose Bay	125,466	118,086	-5.9%
Wabush	51,691	46,946	-9.2%
Total Labrador	177,157	165,032	-6.8%
Total Province	447,498	422,042	-5.7%

Intra-provincial Non-stop Seat Capacity by Airline Q4 2013 and Outlook Q1 2014

Airline	Q4			Q1 Outlook		
	2012	2013	Change	2013	2014	Change
Air Canada	48,052	47,468	-1.2%	47,412	46,332	-2.3%
Provincial	63,104	53,100	-15.9%	61,336	59,000	-3.8%
Total	111,156	100,568	-9.5%	108,748	105,332	-3.1%

Total Quarterly Non-stop Intra-provincial Seat Capacity Q1 2010 – Q1 2014

