

PROVINCIAL AIR ACCESS TRACKING PROGRAM

(1) Inbound direct non-stop seat capacity to Newfoundland and Labrador July – September 2013 (Q3 2013)

NOTES

- Inbound direct non-stop seat capacity represents scheduled, not flown, capacity
- Counts include non-stop capacity to the province's seven major airports: St. John's, Gander, Deer Lake, Stephenville, St. Anthony, Goose Bay and Wabush from any airport outside the province
- Intra-provincial seat capacity is not included (please see (2) *Intra-Provincial non-stop seat capacity in Newfoundland and Labrador July – September 2013 [Q3 2013]* below)
- **Source:** Diio Mi as of Sep 30, 2013 (capacity subject to change as airline schedule filings are updated)

This summary includes the following tables:

- Inbound Non-stop Seat Capacity Overview Q3 2013 and Outlook Q4 2013
- Inbound Non-stop Seat Capacity YTD January to September 2013 and Full Year Outlook
- Inbound Non-stop Seat Capacity by Major Airport Q3 2013 and Outlook Q4 2013
- Inbound non-stop Seat Capacity by Airline Q3 2013 and Outlook Q4 2013

Inbound Non-stop Seat Capacity Overview Q3 2013 and Outlook Q4 2013

From (origin airport)	Q3			Q4 Outlook		
	2012	2013	Change	2012	2013	Change
Domestic						
Halifax, NS	125,688	117,846	-6.2%	118,181	113,221	-4.2%
Charlo, NB	-	1,200	-	1,224	1,170	-4.4%
Blanc Sablon, QC	5,372	4,740	-11.8%	5,372	4,740	-11.8%
Schefferville, QC	477	1,785	274.2%	1,692	1,764	4.3%
Mont Joli, QC*	468	741	58.3%	621	760	22.4%
Sept-Îles, QC*	16,329	17,424	6.7%	17,010	17,775	4.5%
Quebec, QC*	-	407	-	-	481	-
Montreal, QC	19,289	16,003	-17.0%	9,762	8,650	-11.4%
Ottawa, ON	8,633	9,024	4.5%	8,046	6,723	-16.4%
Toronto, ON	138,490	145,396	5.0%	78,661	87,517	11.3%
Calgary, AB	8,840	8,704	-1.5%	-	-	-
Total Domestic	323,586	323,270	-0.1%	240,569	242,801	0.9%
US						
Newark, NJ	10,937	13,428	22.8%	6,060	4,620	-23.8%
Orlando, FL	-	-	-	1,224	1,224	0.0%
Total US	10,937	13,428	22.8%	7,284	5,844	-19.8%
International						
St. Pierre	1,920	1,872	-2.5%	1,872	1,920	2.6%
London (LHR)	11,040	11,040	0.0%	2,520	3,120	23.8%
Cancun, MX	-	-	-	-	-	-
Montego Bay, JM	-	-	-	-	-	-
Varadero, CU	-	-	-	-	-	-
Punta Cana, DO	-	-	-	-	-	-
Total International	12,960	12,912	-0.4%	4,392	5,040	14.8%
Total Capacity	347,483	349,610	0.6%	252,245	253,685	0.6%

Inbound Non-stop Seat Capacity YTD January to September 2013 and Full Year Outlook

From (origin airport)	YTD Jan - Sep			Full Year Outlook		
	2012	2013	Change	2012	2013	Change
Domestic						
Halifax, NS	347,594	341,804	-1.7%	465,775	455,025	-2.3%
Charlo, NB	-	3,532	-	1,224	4,702	-
Blanc Sablon, QC	15,080	15,536	3.0%	20,452	20,276	-0.9%
Schefferville, QC	1,404	5,286	276.5%	3,096	7,050	127.7%
Havre St. Pierre	36	-	-100.0%	36	-	-100.0%
Mont Joli, QC*	1,404	1,881	34.0%	2,025	2,641	30.4%
Sept-Îles, QC*	45,714	55,480	21.4%	62,724	73,255	16.8%
Quebec, QC*	57	407	614.0%	57	888	1457.9%
Montreal, QC	42,138	33,083	-21.5%	51,900	41,733	-19.6%
Ottawa, ON	23,563	25,674	9.0%	31,609	32,397	2.5%
Toronto, ON	297,165	320,822	8.0%	375,826	408,339	8.7%
Calgary, AB	10,064	11,152	10.8%	10,064	11,152	10.8%
Total Domestic	784,219	814,657	3.9%	1,024,788	1,057,458	3.2%
US						
Newark, NJ	23,897	30,105	26.0%	29,957	34,725	15.9%
Orlando, FL	1,632	3,944	141.7%	2,856	5,168	81.0%
Total US	25,529	34,049	33.4%	32,813	39,893	21.6%
International						
St. Pierre	5,538	5,616	1.4%	7,410	7,536	1.7%
London (LHR)	16,320	18,840	15.4%	18,840	21,960	16.6%
Cancun, MX	1,992	-	-100.0%	1,992	-	-100.0%
Montego Bay, JM	1,134	1,701	50.0%	1,134	1,701	0.50
Varadero, CU	3,402	3,213	-5.6%	3,402	3,213	-5.6%
Santa Clara, CU	-	1,701	-	-	1,701	-
Punta Cana, DO	-	1,360	-	-	1,360	-
Total International	28,386	32,431	14.2%	32,778	37,471	14.3%
Total Capacity	838,134	881,137	5.1%	1,090,379	1,134,822	4.1%

*Although Pascan Aviation continues its service from these origins to Wabush, Labrador, 2012/13 seat capacity for this airline is not available from the Diio Mi database. Reported capacity in Q2 2011 was 4,448 seats and 4,927 seats in Q3 2011 (last available)

Inbound Non-stop Seat Capacity by Major Airport Q3 2013 and Outlook Q4 2013

Destination	Origin	Q3			Q4 OUTLOOK		
		2012	2013	Change	2012	2013	Change
St. John's	Halifax	95,677	88,099	-7.9%	89,963	83,439	-7.3%
	Ottawa	8,633	9,024	4.5%	8,046	6,723	-16.4%
	Montreal	17,291	15,411	-10.9%	7,801	8,169	4.7%
	Calgary	8,840	8,704	-1.5%	-	-	-
	Toronto	94,772	99,778	5.3%	66,350	70,765	6.7%
	Newark	10,937	13,428	22.8%	6,060	4,620	-23.8%
	Orlando	-	-	-	1,224	1,224	0.0%
	St Pierre	1,920	1,872	-2.5%	1,872	1,920	2.6%
	London (LHR)	11,040	11,040	0.0%	2,520	3,120	23.8%
	Cancun	-	-	-	-	-	-
	Montego Bay	-	-	-	-	-	-
	Punta Cana	-	-	-	-	-	-
	Varadero	-	-	-	-	-	-
TOTAL		249,110	247,356	-0.7%	183,836	179,980	-2.1%
Deer Lake	Halifax	16,211	15,947	-1.6%	14,518	14,282	-1.6%
	Toronto	33,657	35,630	5.9%	12,311	16,752	36.1%
	Varadero	-	-	-	-	-	-
	TOTAL	49,868	51,577	3.4%	26,829	31,034	15.7%
Gander	Halifax	9,200	9,200	0.0%	9,200	10,900	18.5%
	Toronto	8,171	8,098	-0.9%	-	-	-
	Punta Cana	-	-	-	-	-	-
	TOTAL	17,371	17,298	-0.4%	9,200	10,900	18.5%
St. Anthony	Blanc Sablon	2,686	2,370	-11.8%	2,686	2,370	-11.8%
Stephenville	Toronto	1,890	1,890	0.0%	-	-	-
Wabush	Charlo	-	1,200	-	1,224	1,170	-
	Schefferville	477	1,785	274.2%	1,692	1,764	4.3%
	Quebec*	-	407	-	-	481	-
	Montreal	1,998	592	-70.4%	1,961	481	-75.5%
	Mont Joli*	468	741	58.3%	621	760	22.4%
	Sept-Iles*	16,329	17,424	6.7%	17,010	17,775	4.5%
	TOTAL	19,272	22,149	14.9%	22,508	22,431	-0.3%
Goose Bay	Blanc Sablon	2,686	2,370	-11.8%	2,686	2,370	-11.8%
	Halifax	4,600	4,600	0.0%	4,500	4,600	2.2%
	TOTAL	7,286	6,970	-4.3%	7,186	6,970	-3.0%
TOTAL PROVINCE		347,483	349,610	0.6%	252,245	253,685	0.6%

*Seat capacity provided by Pascan Aviation from these origins to Wabush is not available for 2012/13 from the source database

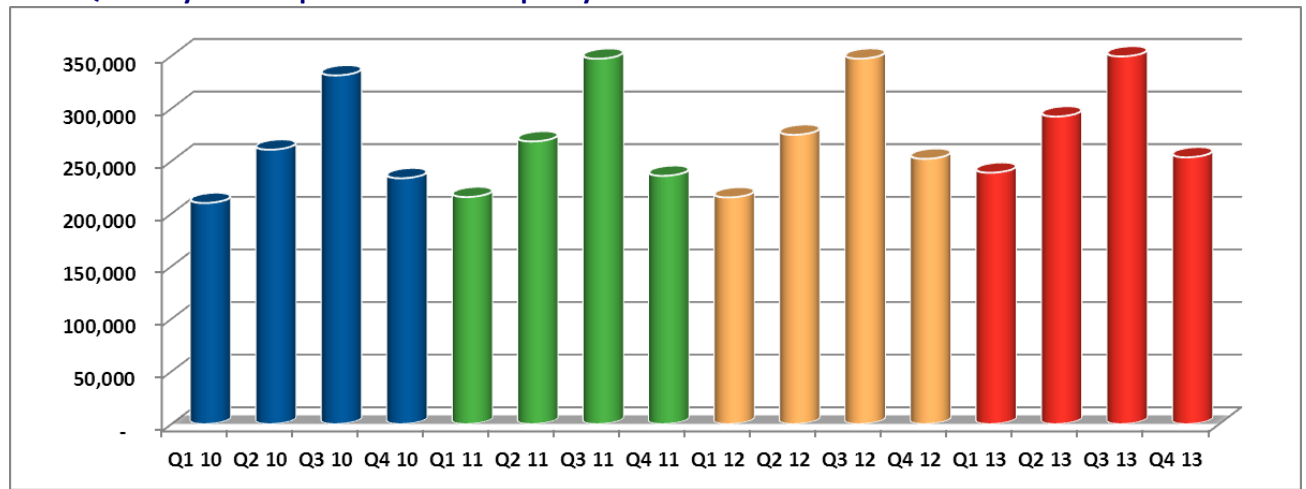
Inbound Non-stop Seat Capacity by Airline Q3 2013 and Outlook Q4 2013

Airline	Q3				Outlook Q4			
	2012	2013	Change	Share (1)	2012	2013	Change	Share (1)
Air Canada	213,779	212,677	-0.5%	60.8%	160,105	159,783	-0.2%	63.0%
Westjet	77,826	82,462	6.0%	23.6%	44,098	52,195	18.4%	20.6%
Porter	22,750	16,380	-28.0%	4.7%	22,260	18,060	-18.9%	7.1%
Provincial Airlines	13,179	13,911	5.6%	4.0%	15,627	13,888	-11.1%	5.5%
Continental / United	10,937	13,428	22.8%	3.8%	6,060	4,620	-23.8%	1.8%
Sunwing	5,670	5,670	0.0%	1.6%	-	-	-	0.0%
Air St. Pierre	1,920	1,872	-2.5%	0.5%	1,872	1,920	2.6%	0.8%
Air Inuit	720	702	-2.5%	0.2%	693	711	2.6%	0.3%
Air Liaison	702	2,508	257.3%	0.7%	1,530	2,508	63.9%	1.0%
Pascan Aviation*	N/A	N/A	-	-	N/A	N/A	-	-
Total Province	347,483	349,610	0.6%	100%	252,245	253,685	0.6%	100%

* Pascan Aviation still serving Labrador in 2012/2013 but seat capacity not available from database

(1) Airline share of inbound non-stop seat capacity in Q3 2013 and Q4 2013

Total Quarterly Non-stop Inbound Seat Capacity to Newfoundland and Labrador 2010 – 2013



Does not include Pascan Aviation capacity in 2012 and 2013 as data not available from source database

(2) Intra-provincial non-stop seat capacity in Newfoundland and Labrador July – September 2013 (Q3 2013)

NOTES

- Seat capacity represents scheduled, not flown, capacity
- Counts include non-stop capacity between the province's seven major airports: St. John's, Gander, Deer Lake, Stephenville, St. Anthony, Goose Bay and Wabush
- Source: Diio Mi as of June 27, 2013 (capacity subject to change as airline schedule filings are updated)

The summary report includes the following tables:

- Non-stop Seat Capacity by Airport Q3 2013 and Outlook Q4 2013
- Non-stop Seat Capacity YTD January to September 2013 and Full Year Outlook
- Non-stop Seat Capacity by Airline Q3 2013 and Outlook Q4 2013

Intra-provincial Non-stop Seat Capacity by Airport Q3 2013 and Outlook Q4 2013

Destination	Q3			Q4 Outlook		
	2012	2013	Change	2012	2013	Change
Island						
St Johns	30,540	29,785	-2.5%	30,670	28,405	-7.4%
Gander	8,280	9,936	20.0%	8,226	8,748	6.3%
Deer Lake	22,628	20,454	-9.6%	22,876	20,262	-11.4%
Stephenville	2,210	1,200	-45.7%	2,244	1,170	-47.9%
St Anthony	3,570	3,150	-11.8%	3,570	3,150	-11.8%
Total Island	67,228	64,525	-4.0%	67,586	61,735	-8.7%
Labrador						
Goose Bay	32,386	28,830	-11.0%	31,022	28,800	-7.2%
Wabush	13,876	11,688	-15.8%	12,548	11,658	-7.1%
Total Labrador	46,262	40,518	-12.4%	43,570	40,458	-7.1%
Total Province	113,490	105,043	-7.4%	111,156	102,193	-8.1%

Intra-provincial Non-stop Seat Capacity YTD Jan to Sep 2013 and Full Year Outlook 2013

Destination	YTD Jan-Sep			Full Year Outlook		
	2012	2013	Change	2012	2013	Change
Island						
St Johns	91,719	90,064	-1.8%	122,389	118,469	-3.2%
Gander	24,084	27,324	13.5%	32,310	36,072	11.6%
Deer Lake	69,240	64,144	-7.4%	92,116	84,406	-8.4%
Stephenville	7,412	4,586	-38.1%	9,656	5,756	-40.4%
St Anthony	10,300	10,048	-2.4%	13,870	13,198	-4.8%
Total Island	202,755	196,166	-3.2%	270,341	257,901	-4.6%
Labrador						
Goose Bay	94,444	89,208	-5.5%	125,466	118,008	-5.9%
Wabush	39,143	36,100	-7.8%	51,691	47,758	-7.6%
Total Labrador	133,587	125,308	-6.2%	177,157	165,766	-6.4%
Total Province	336,342	321,474	-4.4%	447,498	423,667	-5.3%

Intra-provincial Non-stop Seat Capacity by Airline Q3 2013 and Outlook Q4 2013

Airline	Q3			Q4 Outlook		
	2012	2013	Change	2012	2013	Change
Air Canada	47,972	52,256	8.9%	48,052	49,556	3.1%
Provincial	65,518	52,787	-19.4%	63,104	52,637	-16.6%
Total	113,490	105,043	-7.4%	111,156	102,193	-8.1%

Total Quarterly Non-stop Intra-provincial Seat Capacity 2010 – 2013

